



Public Health
England

National Mental Health Dementia & Neurology Intelligence Network

Variation between CCGs in need, prevalence, service use and outcomes

Mike Streater (Head of Intelligence (Mental Health), NMHDNIN)
Thursday 16th March 2017



What we will cover

1. Introduction to the National Mental Health Intelligence Network
2. Overview of how to navigate fingertips and the CMHD profile
3. Detailed look at how the CMHD profile focussing on:
 - a. Additions to the profile in the past year
 - b. The relationship between deprivation and outcomes
 - c. Proposed developments of the profile in 2017.
4. Questions and feedback



Public Health
England

Introduction to the National Mental Health Intelligence Network



Introduction to the network

- Established in 2014, sits within the National Mental Health, Dementia and Neurology Intelligence Network (NMHDNIN), one of PHE's five HINs which mirror NHSE Clinical Networks.
- The NMHIN is a cross-system network:
 - Chaired by the NHSE National Clinical Director for Mental Health
 - Leadership Group – NHSE, HSCIC, DH, PHE, NHSI, 3rd Sector and Clinical Expertise
- Our main products:
 - 1. Data profiling tools**
 - 2. Intelligence reports and briefings**



The fingertips data profiling tools

- Publicly available online tools that allow you to access and view national metrics in relation to mental health
- Data is presented by a range of geographies and localities, allowing you to benchmark and identify variation
- Data is presented across a pathway, with data on: risk and related factors, prevalence, services, quality & outcomes, and finance. **CMHD also has pathway, therapy type and problem descriptor.**
- Seven mental health data profiling tools on: **joint strategic needs assessment, common mental health disorders, severe mental illness, suicide prevention, co-occurring substance misuse and mental health issues, children and young people's mental health and wellbeing, and crisis care**



Common Mental Health Disorder domains

Domain 1: CMHD pathway

- Profile overview of key indicators

Domain 2: Risk & related factors

- Deprivation
- Risk factors such as unemployment, homelessness
- Risk factors affecting children

Domain 3: Prevalence

- Estimated prevalence
- Recorded prevalence

Domain 4: Services

- IAPT
- Primary care prescribing

Domain 5: Quality & Outcomes

- IAPT
- Primary care (QOF)

Domain 6: Finance

- Prescribing
- Programme budgeting

Domain 6: Outcomes by Problem Descriptor

- Recovery rates

Domain 7: Availability by therapy type

- Referral numbers by therapy type



Public Health
England

How to navigate the CMMHD profile



Mental Health Dementia and Neurology

Introduction

The Mental Health Dementia and Neurology Intelligence Network - *improving the health of communities by making data and information accessible.*

These system profiling tools are available to all. They are primarily intended to provide better access to data and information to support people involved in commissioning, planning and providing services locally. The tools bring together a wide range of publicly available data to offer a broad picture of mental health dementia and neurology and provide the means to focus on specific topic areas. The tools enable and advocate benchmarking against peers. The core aim is to provide information for improvement, not judgement.

To view a video introduction to the network and a guide to using the network's profiling tools click [here](#).

Comments on these tools are welcome, please send your feedback to email: mhdnin@phe.gov.uk.

Mental Health Dementia and Neurology

Children's and Young People's Mental Health and Wellbeing

This tool presents collated data on risk, prevalence and the range of health, social care and education services that support children with, or vulnerable to, mental illness.

Common Mental Health Disorders

This tool presents collated risk, prevalence, early intervention, assessment and treatment, outcomes and service costs data relating to people with common mental health disorders, including depression and anxiety disorders.

Co-occurring substance misuse and mental health issues

This tool presents data on smoking, alcohol use and drug use, including prevalence and treatment demand and response, alongside related mental health data to inform practice around co-occurring substance use and mental health issues.

Crisis Care Profile

This profile brings together nationally available data on mental health crisis care, including metrics for; prevalence, risk factors, prevention, access to support, access to urgent care, and quality of

Dementia Profile

This profile presents data following the dementia pathway of care including indicators for: prevalence, preventing well, diagnosing well, living well, supporting well and dying well. These aim

Mental Health JSNA

This profile is designed to support local Health & Wellbeing Boards in developing Mental Health JSNAs. It brings together nationally available data on mental health prevalence, risk and protective factors



Common Mental Health Disorders

Indicator keywords

Introduction

Welcome to the Common Mental Health Disorders Profiling Tool. It has been developed to support an intelligence driven approach to understanding and meeting need. It collates and analyses a wide range of publically available data on prevalence, risk, prevention, early intervention, assessment, treatment, outcomes and service costs. It provides commissioners, service providers, clinicians, services users and their families with the means to benchmark their area against similar populations and gain intelligence about what works.

Tool structure - data are presented under the headings Risk and Related Factors, Prevalence, Services, Quality and Outcomes, and Finance. Within this they are grouped by geography (Clinical Commissioning Group or local authority) and then ordered by topic (e.g. primary care followed by secondary care).

Tool content - data are drawn from many sources and vary by time period, population and presentation of values. Care should be taken with interpretation. Detailed meta data and any caveats are set out in the Definitions section.

Data quality - indicators are included if viewed as robust, of sufficient quality, or they offer an important element that could not be otherwise gained. Each indicator has been assessed and labelled with its quality rank.

Common Mental Health Disorder Pathway

The Common Mental Health Disorder Care Pathway is a high level summary using key indicators to help commissioners assess and benchmark how they manage this important condition. The aim is to ensure that this approach is consistent with and linked to the Commissioning for Value packs published by NHS England.

Supporting Documents

- [Video guide to using mental health profiling tools](#)
- [Fingertips user guide CMHD](#): helps navigate the CMHD tool

START
Go to the data

Recent updates

March 2017

33 indicators updated from the IAPT annual report 2015/16

- 26 indicators updated in the outcome by problem descriptor domain
- 7 indicators in the availability of therapy type domain

February 2017

11 Monthly IAPT indicators in the quality and outcomes domain and 1 indicator in the Risk factors domain updated

- Eleven monthly IAPT indicators have been updated for July - Sept 2016: they include indicators on access, recovery and reliable improvement rates, non-attendance rates and waiting times. These are in the quality and outcomes domain.
- Supported asylum seekers per 10,000 in the risk and related factors domain.



Common Mental Health Disorders

Indicator keywords

CMHD pathway Risk and related factors **Prevalence** Services Quality and Outcomes Finance Outcomes by problem descriptor Availability of therapy type

Overview Compare indicators Map Trends Compare areas **Area profiles** Definitions Download

Area type: CCG Areas grouped by: Sub-region Benchmark: England
 Area: NHS Bedfordshire CCG Sub-region: Central Midlands
 Search for an area 10 most similar CCGs to Bedfordshire

Compared with benchmark: Lower Higher Not Compared * a note is attached to the value, hover over to see more details

Recent trends: (in development) Could not be calculated Increasing / Getting worse Increasing / Getting better Decreasing / Getting worse Decreasing / Getting better No significant change Increasing Decreasing

Data quality: Significant concerns Some concerns Robust

Export table as image



Indicator	Period	Bedfordshire		Sub-region	England	England			
		Recent Trend	Count	Value	Value	Value	Lowest	Range	Highest
Estimated prevalence of common mental health disorders: % of population aged 16-74	2014/15	-	47,931	15.7%*	14.2%*	15.6%*	10.3%		25.5%
Depression recorded prevalence (QOF): % of practice register aged 18+	2015/16	↓	32,089	8.8%	8.9%	8.3%	4.5%		14.1%
Depression recorded incidence (QOF): % of practice register aged 18+	2015/16	-	5,788	1.6%	1.5%	1.4%	0.6%		2.8%
Long-term mental health problems (GP Patient Survey): % of respondents (aged 18+)	2015/16	→	237	3.8%	4.7%*	5.2%	2.2%		8.8%
Depression and anxiety prevalence (GP Patient Survey): % of respondents aged 18+	2015/16	-	702	10.8%	11.5%*	12.7%	7.8%		19.1%



Data at multiple geographies / co-terminosity

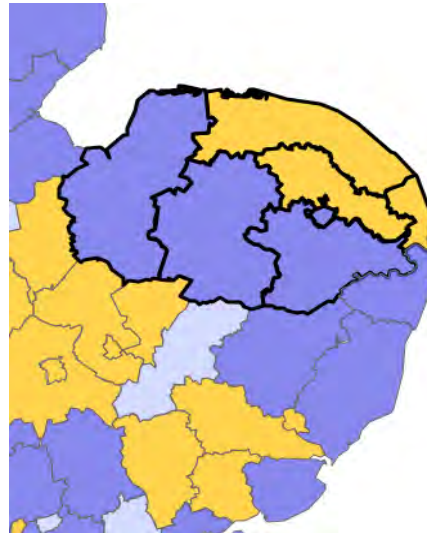
County



Area

Norfolk

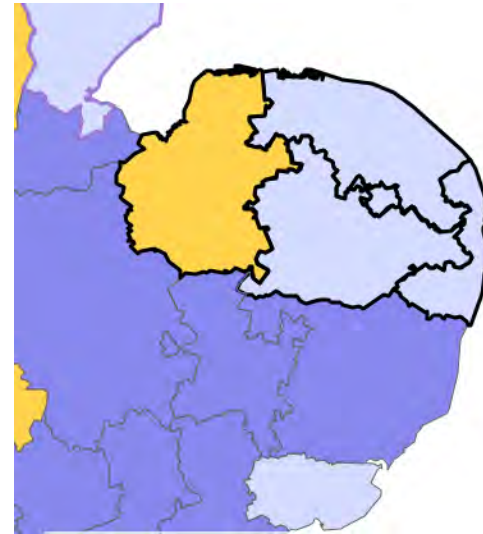
District



Area

- Breckland
- Broadland
- Great Yarmouth
- King's Lynn and West Norfolk
- North Norfolk
- Norwich
- South Norfolk

CCG



Area

- NHS Great Yarmouth And Waveney CCG
- NHS North Norfolk CCG
- NHS Norwich CCG
- NHS South Norfolk CCG
- NHS West Norfolk CCG



Public Health
England

What does the CMHD profile tell us
about need, access and outcomes?



Deprivation

Area	Value	Lower CI	Upper CI
England	21.8	-	-
East of England region	-	-	-
NHS Great Yarmouth And...	28.5	-	-
NHS Luton CCG	27.6	-	-
NHS Southend CCG	24.5	-	-
NHS West Norfolk CCG	23.2	-	-
NHS Norwich CCG	22.9	-	-
NHS North East Essex CC...	22.0	-	-
NHS Thurrock CCG	21.6	-	-
NHS Basildon And Brentw...	19.6	-	-
NHS North Norfolk CCG	17.9	-	-
NHS Ipswich And East Su...	17.4	-	-
NHS West Suffolk CCG	16.4	-	-
NHS Cambridgeshire and...	16.4	-	-
NHS West Essex CCG	16.1	-	-
NHS South Norfolk CCG	15.9	-	-
NHS Bedfordshire CCG	14.9	-	-
NHS Castle Point And Ro...	13.9	-	-
NHS Mid Essex CCG	13.9	-	-
NHS East And North Hert...	13.1	-	-
NHS Herts Valleys CCG	11.4	-	-

Source: Department of Communities and Local Government (DCLG)



Prevalence estimates

Modelled estimates

Area	Value	Lower CI	Upper CI
England	15.6*	-	-
East of England region	16.0*	-	-
NHS Luton CCG	19.0*	-	-
NHS Basildon And Brentw...	17.9*	-	-
NHS Thurrock CCG	17.9*	-	-
NHS Great Yarmouth And...	17.8*	-	-
NHS Herts Valleys CCG	17.7*	-	-
NHS Castle Point And Ro...	17.6*	-	-
NHS Southend CCG	16.8*	-	-
NHS East And North Hert...	16.2*	-	-
NHS West Essex CCG	15.8*	-	-
NHS Bedfordshire CCG	15.7*	-	-
NHS North East Essex CC...	15.6*	-	-
NHS Norwich CCG	15.6*	-	-
NHS North Norfolk CCG	15.4*	-	-
NHS South Norfolk CCG	15.1*	-	-
NHS Cambridgeshire and...	15.1*	-	-
NHS West Norfolk CCG	15.0*	-	-
NHS Ipswich And East Su...	14.6*	-	-
NHS West Suffolk CCG	14.5*	-	-
NHS Mid Essex CCG	14.2*	-	-

Source: CCG estimates

QOF

Area	Value	Lower CI	Upper CI
England	12.7	12.6	12.8
East of England region	11.7*	-	-
NHS Norwich CCG	14.3	13.2	15.6
NHS Great Yarmouth And...	14.3	13.1	15.5
NHS North East Essex CC...	13.9	13.0	14.9
NHS West Norfolk CCG	13.8	12.5	15.2
NHS Southend CCG	13.8	12.5	15.1
NHS Ipswich And East Su...	12.7	11.8	13.5
NHS Thurrock CCG	12.6	11.3	14.0
NHS Luton CCG	11.8	10.7	13.0
NHS Mid Essex CCG	11.6	10.8	12.5
NHS South Norfolk CCG	11.5	10.4	12.6
NHS Cambridgeshire and...	11.4	10.9	12.0
NHS Castle Point And Ro...	11.4	10.3	12.7
NHS East And North Hert...	10.9	10.2	11.6
NHS West Suffolk CCG	10.8	9.8	11.9
NHS Bedfordshire CCG	10.8	10.1	11.6
NHS Basildon And Brentw...	10.8	9.8	11.8
NHS North Norfolk CCG	10.8	9.6	12.0
NHS West Essex CCG	10.3	9.4	11.3
NHS Herts Valleys CCG	9.7	9.1	10.3

Source: GP patient survey, NHS England. The data used includes that from GP patient surveys undertaken in July - September and January - March, which is equivalent to a financial year's data.

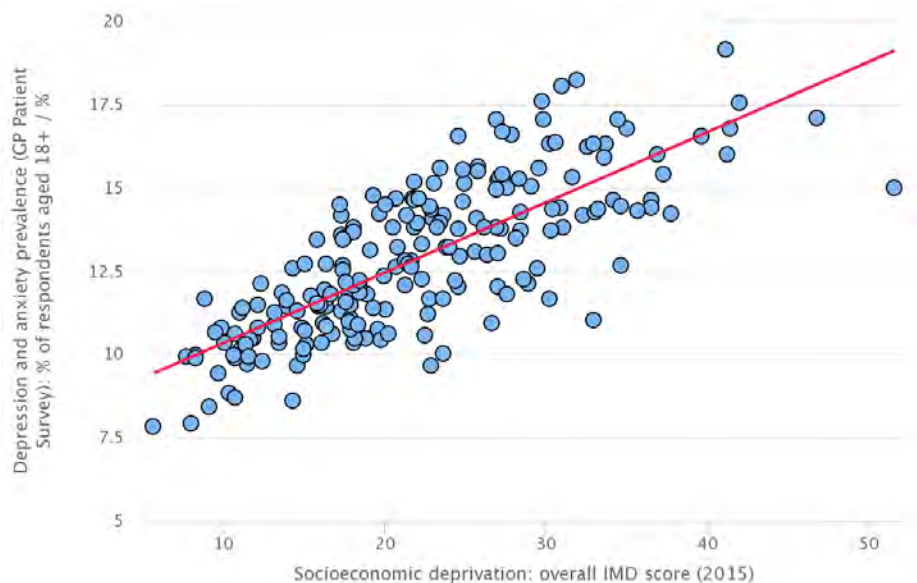
Area	Value	Lower CI	Upper CI
England	8.3	8.3	8.3
East of England region	8.0	8.0	8.0
NHS Great Yarmouth And...	9.2	9.0	9.3
NHS Basildon And Brentw...	8.9	8.8	9.0
NHS Bedfordshire CCG	8.8	8.7	8.9
NHS Ipswich And East Su...	8.7	8.6	8.8
NHS West Suffolk CCG	8.7	8.5	8.8
NHS Thurrock CCG	8.5	8.4	8.7
NHS Southend CCG	8.5	8.3	8.6
NHS Norwich CCG	8.3	8.1	8.4
NHS West Norfolk CCG	8.1	8.0	8.3
NHS North East Essex CC...	8.1	8.0	8.2
NHS East And North Hert...	7.9	7.8	8.0
NHS Herts Valleys CCG	7.8	7.8	7.9
NHS West Essex CCG	7.7	7.6	7.8
NHS Cambridgeshire and...	7.7	7.6	7.7
NHS South Norfolk CCG	7.6	7.5	7.8
NHS Castle Point And Ro...	7.3	7.1	7.4
NHS North Norfolk CCG	7.2	7.1	7.4
NHS Mid Essex CCG	6.7	6.6	6.8
NHS Luton CCG	6.5	6.4	6.6

Source: QOF



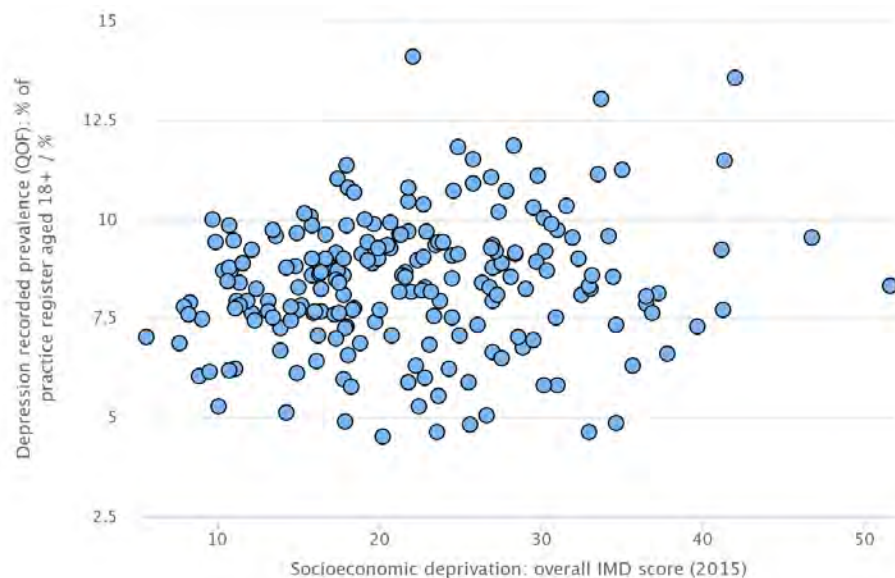
Relationship between deprivation and prevalence

GP survey



● CCG in England
— $y = 0.21x + 8.24$
 $R^2 = 0.6$

QOF recorded

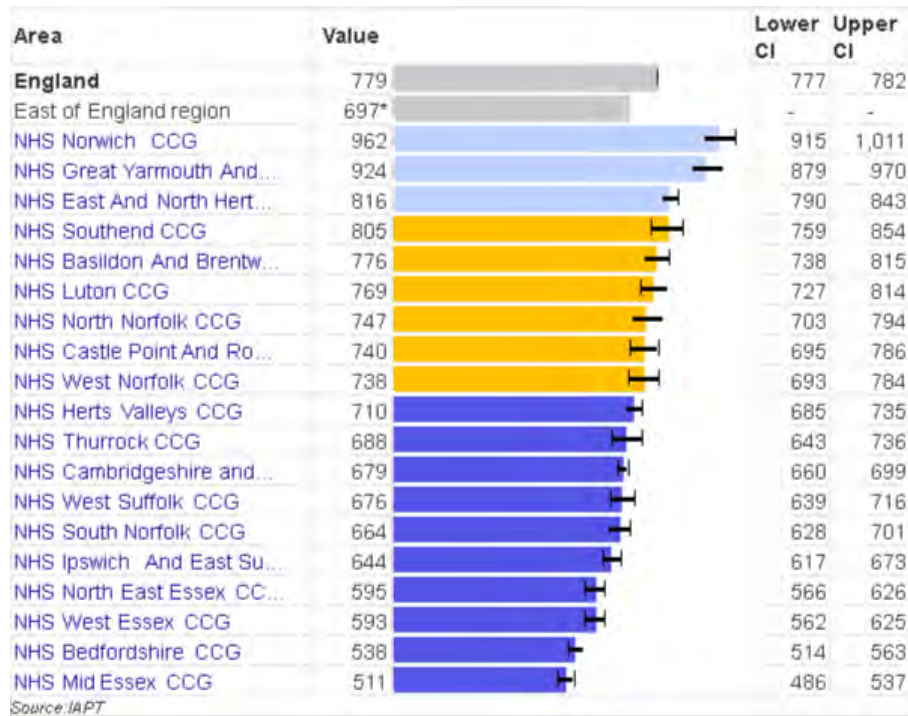


● CCG in England
Trend line not drawn when R is below 0.15 ($R^2 = 0.02$)

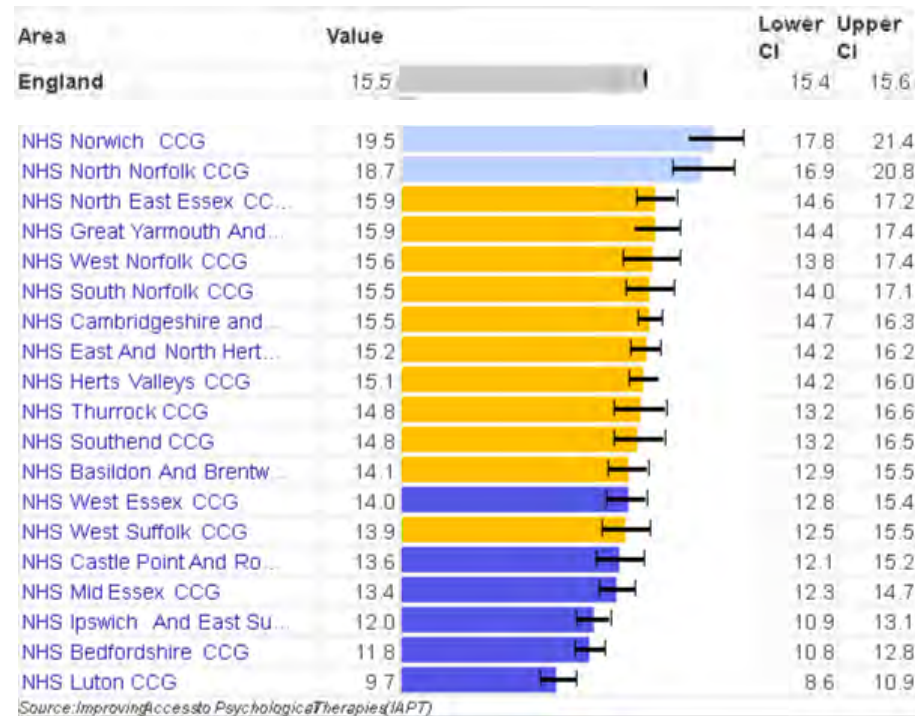


Access to IAPT services (referrals)

Rate per 100,000 popn

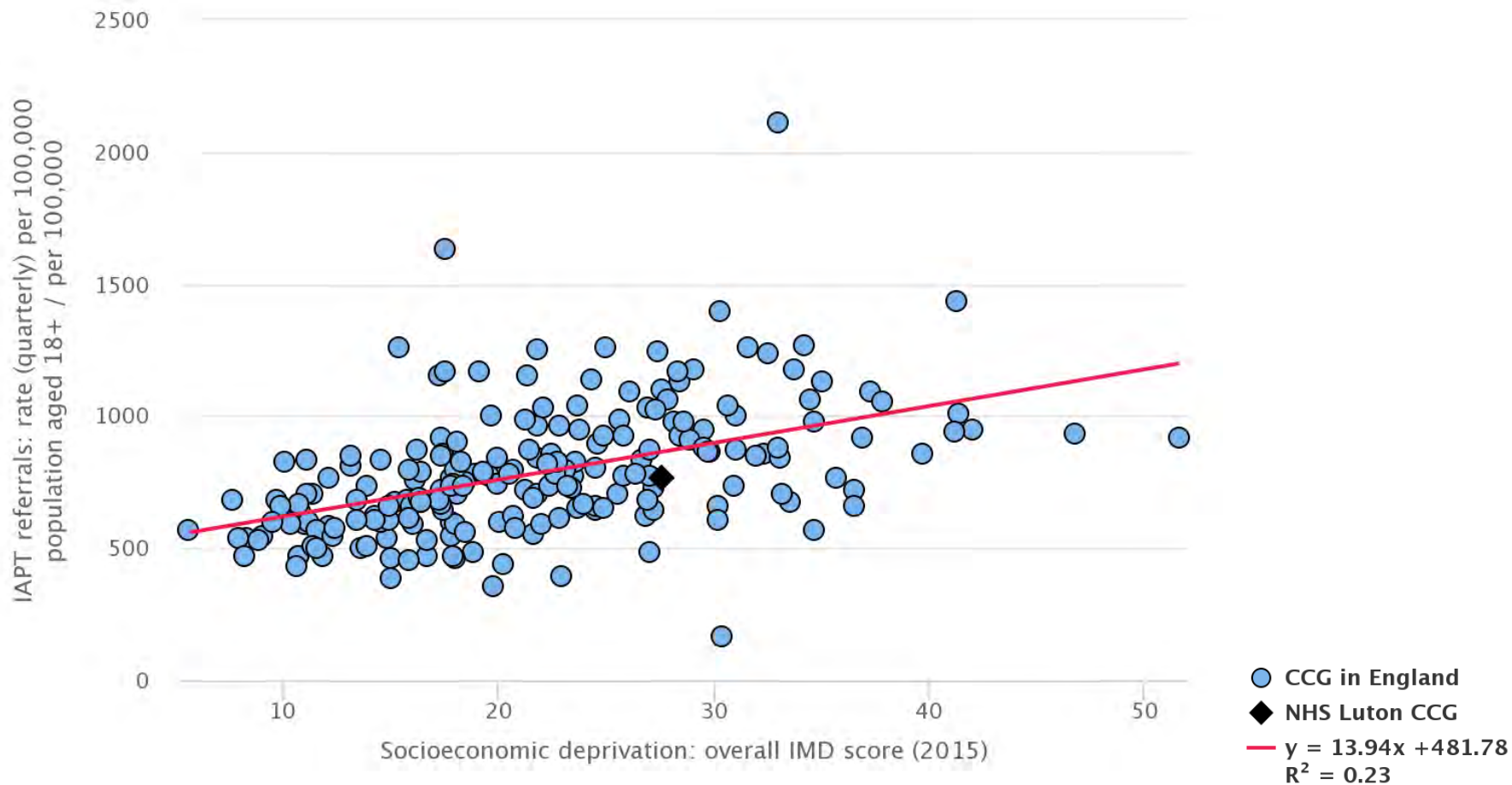


Percentage of those with anxiety / depression



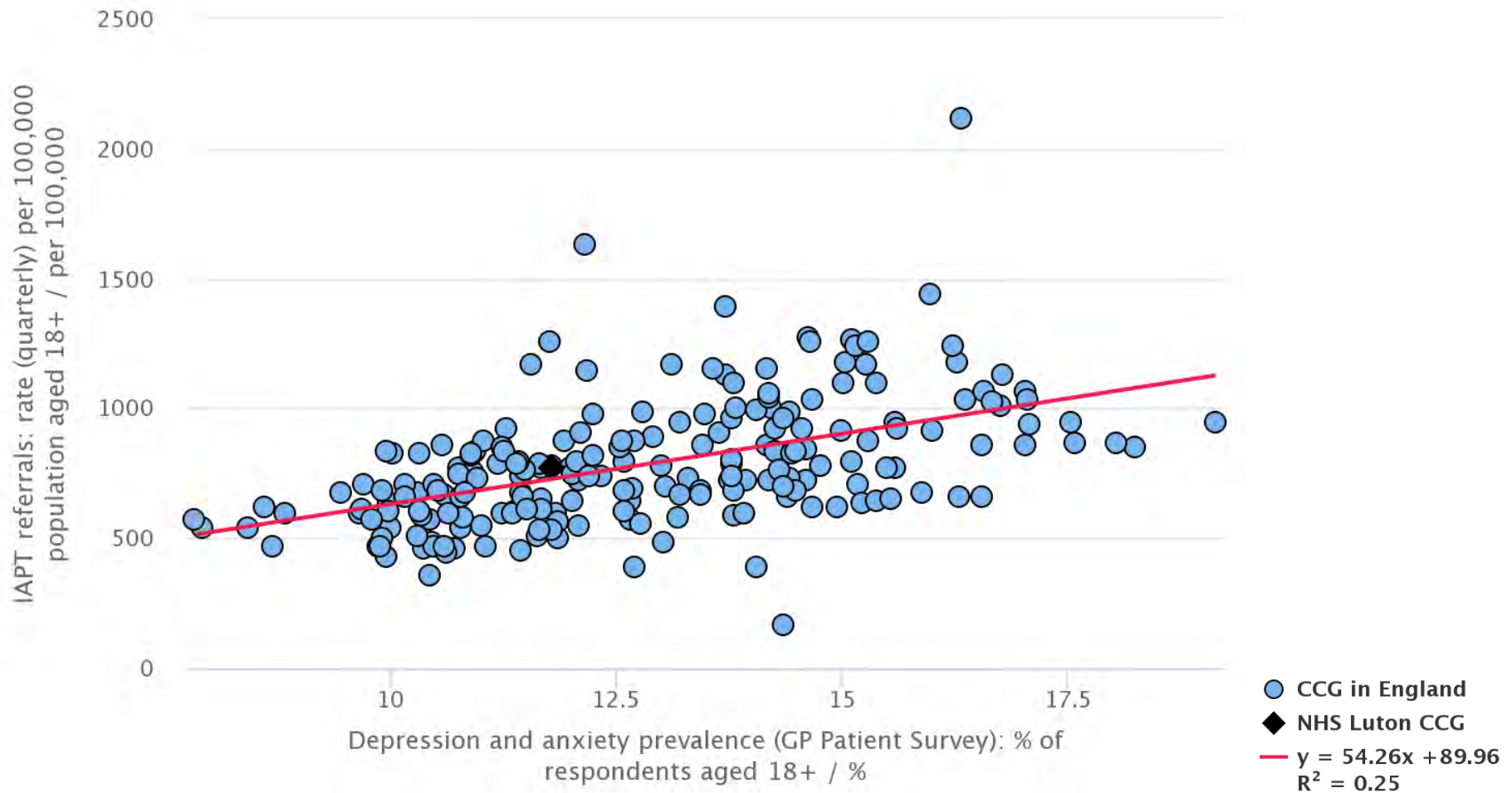


Relationship between deprivation and referrals





Relationship between prevalence and referrals

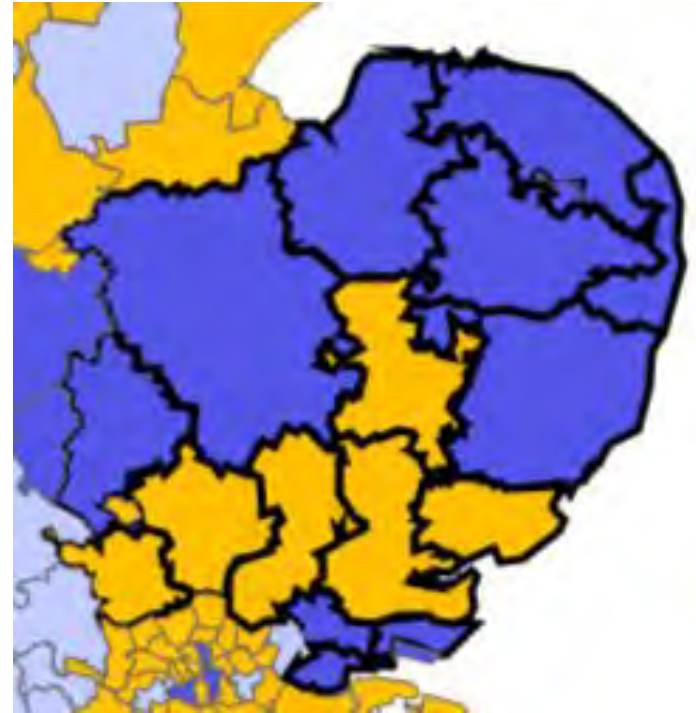




IAPT recovery

Area	Value	Lower CI	Upper CI
England	48.4	48.0	48.9
East of England region	39.6*	-	-
NHS West Essex CCG	51.7	43.7	59.7
NHS Herts Valleys CCG	51.5	47.1	56.0
NHS East And North Hert...	48.9	44.4	53.5
NHS West Suffolk CCG	45.0	38.3	51.9
NHS Mid Essex CCG	44.7	37.8	51.8
NHS Luton CCG	43.3	35.7	51.3
NHS Cambridgeshire and...	42.8	39.1	46.5
NHS North East Essex CC...	41.7	34.7	49.0
NHS Bedfordshire CCG	41.7	36.2	47.3
NHS South Norfolk CCG	40.0	33.8	46.5
NHS Ipswich And East Su...	40.0	34.4	45.9
NHS Thurrock CCG	38.5	30.5	47.0
NHS Great Yarmouth And...	36.0	30.3	42.1
NHS West Norfolk CCG	35.5	28.4	43.3
NHS Norwich CCG	34.7	29.0	40.8
NHS North Norfolk CCG	33.3	26.6	40.8
NHS Southend CCG	28.3	23.5	33.7
NHS Basildon And Brentw...	25.6	21.7	29.8
NHS Castle Point And Ro...	25.0	20.3	30.4

Source: IAPT

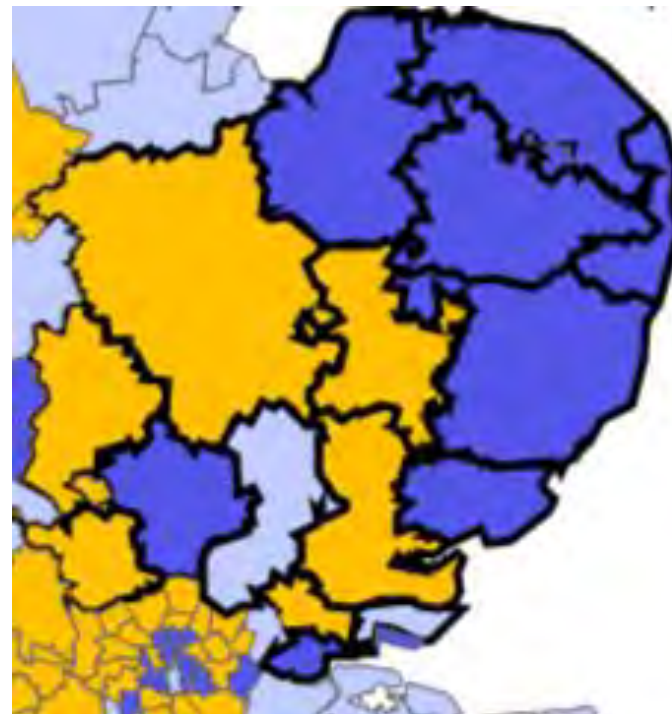




IAPT reliable improvement

Area	Value	Lower CI	Upper CI
England	64.8	64.6	65.1
East of England region	60.9*	-	-
NHS Castle Point And Ro...	73.6	69.2	77.5
NHS West Essex CCG	69.9	65.8	73.7
NHS Mid Essex CCG	68.0	63.8	71.8
NHS Basildon And Brentw...	66.4	62.5	70.1
NHS Luton CCG	66.1	60.3	71.4
NHS Herts Valleys CCG	65.9	63.7	68.0
NHS West Suffolk CCG	65.4	61.3	69.3
NHS Cambridgeshire and...	63.5	61.6	65.4
NHS Bedfordshire CCG	62.8	59.8	65.7
NHS East And North Hert...	61.3	58.9	63.6
NHS Ipswich And East Su...	60.2	57.0	63.4
NHS Southend CCG	60.2	56.4	63.8
NHS North East Essex CC...	55.1	51.4	58.8
NHS North Norfolk CCG	53.5	49.1	57.9
NHS South Norfolk CCG	51.7	48.1	55.4
NHS Great Yarmouth And...	50.8	46.9	54.8
NHS West Norfolk CCG	49.6	45.5	53.6
NHS Thurrock CCG	47.6	38.3	57.1
NHS Norwich CCG	45.7	42.1	49.4

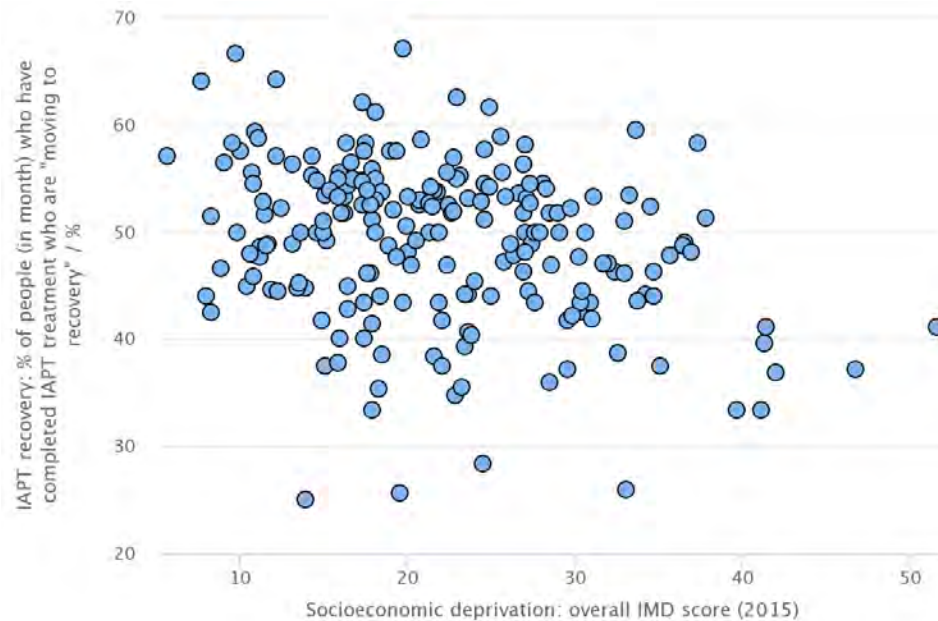
Source: IAPT





Relationship between deprivation & outcomes

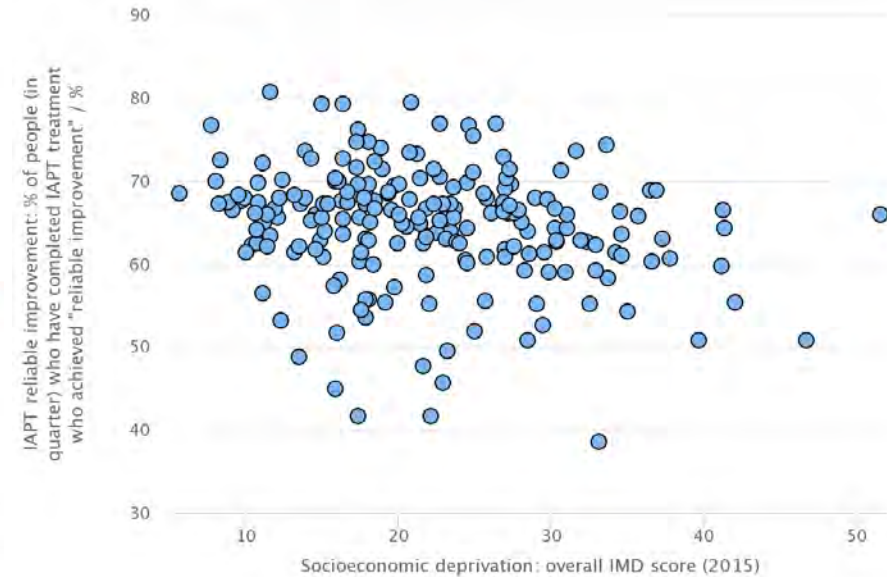
Recovery



● CCG in England

Trend line not drawn when R
is below 0.15 ($R^2 = 0.08$)

Reliable improvement



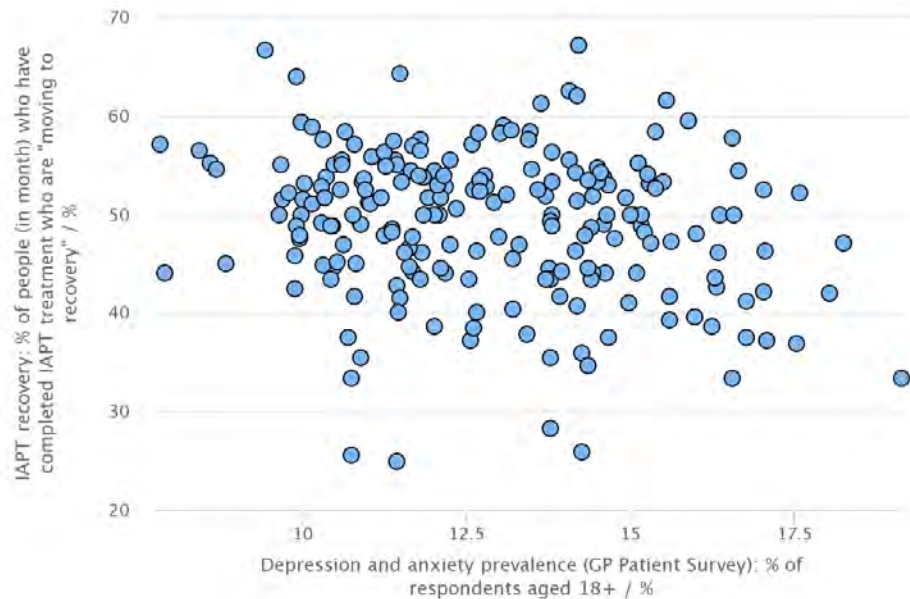
● CCG in England

Trend line not drawn when R
is below 0.15 ($R^2 = 0.04$)



Relationship between prevalence & outcomes

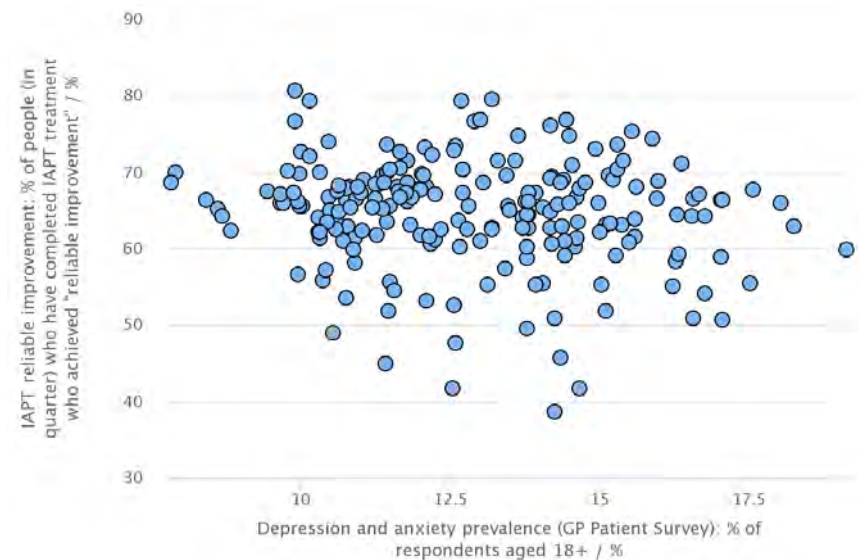
Recovery



● CCG in England

Trend line not drawn when R is below 0.15 ($R^2 = 0.04$)

Reliable improvement



● CCG in England

Trend line not drawn when R is below 0.15 ($R^2 = 0.02$)



Public Health
England

Recent developments



Additions in 2016

Annual IAPT report

- Outcomes by problem descriptor
 - Recovery by problem descriptor
 - Percentage of completed treatments with different problem descriptors
- Availability by therapy type
 - Numbers treated by different therapy type

2014/15 & 2015/16 data

Public Health England

Home > Mental Health > Introduction > Data Contact Us

Common Mental Health Disorders

Indicator keywords

CMHD pathway	Risk and related factors	Prevalence	Services	Quality and Outcomes	Finance	Outcomes by problem descriptor	Availability of therapy type
--------------	--------------------------	-------------------	----------	----------------------	---------	---------------------------------------	-------------------------------------



Public Health
England

Forthcoming developments



Forthcoming developments

- Finance data on planned IAPT spend
- Annual IAPT report
 - Waiting time between 1st & 2nd treatment
 - Intensity of therapy – low, high, both
 - Finishing a course of treatment with paired ADSMs by problem descriptor
 - GAD & PHQ scores at start & end of treatment and effect scores



Public Health
England

Questions and feedback



Public Health
England

Contact us

Contact us with any further feedback at:

- Mike Streater (Head of Intelligence (Mental Health), NMHDNIN)
mike.streater@phe.gov.uk

Visit the fingertips CMHD profile:

- <https://fingertips.phe.org.uk/profile-group/mental-health/profile/common-mental-disorders>
- Or Google 'mental health fingertips'